

**MEDICABULARY**

# **Task Analyses & User Flows**

# Task Analysis

## TASK 1

### To add a personal word set.

#### Entry Point

Open App

#### Success Criteria

Create a set of own words to study from.

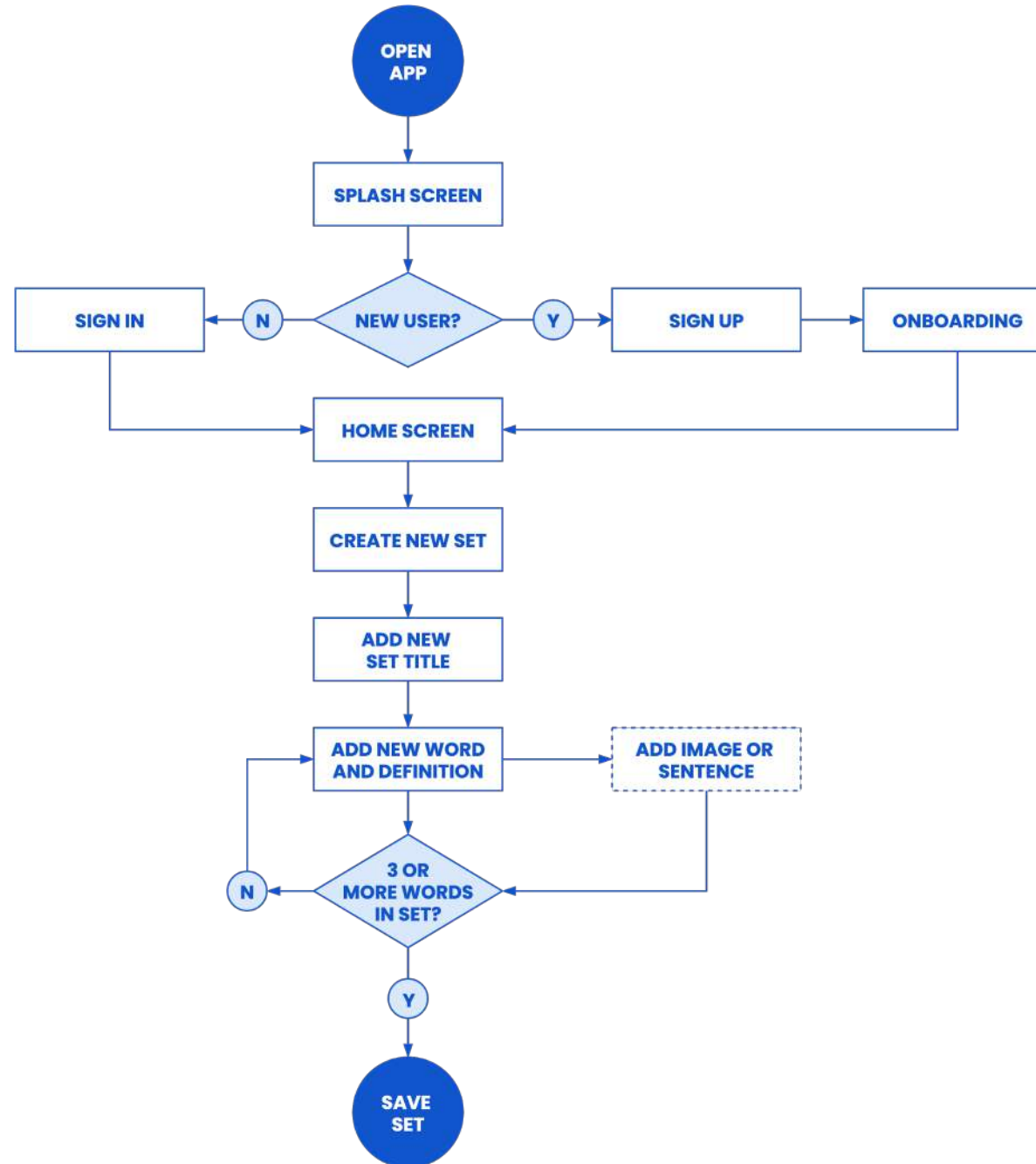
#### Task Analysis

1. Open app
2. Sign up
3. Onboarding
4. Hit "Create New Set" button
5. Type or dictate "Title" of new set
6. Tap on new card
7. Type or dictate word
8. Tap on definition field
9. Type or dictate definition, add optional image or sentence using word.
10. Repeat steps 6-9 at least 2 more times
11. Hit "Done"

# User Flow

## TASK 1

To add a personal word set.



 Optional action

# Task Analysis

## TASK 2

**To learn and test from a personal word set.**

### Entry Point

Open App

### Success Criteria

Score 100% on test.

## Task Analysis

1. Open app
2. Sign in
3. Choose personal set of words
4. Choose "Test" button
5. Select test settings. Choose which type of questions to include (multiple choice, type word, true/false, flashcards).
6. Start test
7. Answer all questions
8. Receive grade
9. If < 100%, restart from step 5. If 100%, can mark that set complete.

# User Flow

## TASK 2

To learn and test from a personal word set.

